



Australia's leading rail and transit systems provider





Enabling communities to thrive

Downer is the leading provider of integrated infrastructure services across Australia and New Zealand.

We are committed to building strong relationships with our customers, people and communities.

Together, we enable communities to thrive, shaping a connected and sustainable future.

With 31,000 employees, our footprint covers every corner of Australia and New Zealand.

31,000
employees



250+
locations



\$12.6 billion
revenue in
FY2023



A network of
25,000
suppliers and
subcontractor partners



What we do

We operate across four sector-focused, trans-Tasman business units, leveraging our technical capability to ensure our customers' success.



Rail & Transit Systems

Rollingstock asset management services



Revenue* **\$1.3 billion**



People - **1,850**



Transport & Infrastructure

Integrated transport network and infrastructure delivery services



Revenue* **\$4.5 billion**



People - **6,695**



Energy & Utilities

Services and solutions that connect communities to essential networks and infrastructure.



Revenue* **\$3.2 billion**



People - **9,950**



Social Infrastructure & Citizen Services

Management and operations of buildings and facilities



Revenue* **\$2.4 billion**



People - **12,850**

* FY23 revenue

Dreaming of something big? Take the next step in your career journey with Downer.

As the leading provider of rail and transit systems in Australia, we're at the forefront of rollingstock design, manufacturing, maintenance, decarbonisation and digital transit solutions. With a strong pipeline of transformative projects, we're looking for passionate professionals to join our journey. Whether you're skilled in rail engineering, maintenance, project management, or operations, you'll be part of a team that's redefining the future of transport.

What's in it for you?

- Flexible working arrangements, including hybrid options.
- Opportunities to work on cutting-edge projects that move communities.
- A supportive, inclusive environment where we stand for each other.
- Clear pathways for career growth.



Ready to make your mark?
Register for our EOI today, and our team will get back to you about a role.

Experience the
Downer Difference.



Australia's leading provider of rail and transit systems

Downer's Rail & Transit Systems is the leading rail business in Australia, with expertise in delivering whole-of-life asset management support to our customers.

We have over 155 years' rail experience delivering innovative transport solutions.

Today, we leverage our capabilities to offer rollingstock, infrastructure, rail systems, operation and maintenance, system integration, engineering innovations and digital and data solutions.

We design, build and maintain trains across Australia with some of our flagship projects including:

- Design, manufacture and maintain 65 new six-car trains as part of Queensland Train Manufacturing Program, supporting Cross River Rail and the 2032 Brisbane Olympic and Paralympic Games.
- Design, manufacture and maintain 119 Waratah trains in NSW – Australia's largest passenger fleet servicing Australia's largest passenger network.
- Design, manufacture and maintain 70 High Capacity Metro Trains in Victoria – a step change in public transport offering 20 per cent more capacity than other fleets and designed with customer-centered stakeholder engagement.
- Refurbish 85% of the Yarra Trams fleet, making it the world's largest tram refurbishment project.
- Manufacture over 1,000 rail cars and nearly 1,000 locomotives from our Maryborough, Queensland site.



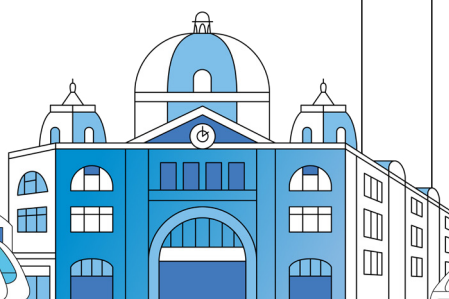
2000+
rollingstock units
maintained*

15+ sites
depots & facilities
operated

3000+
rollingstock units built*

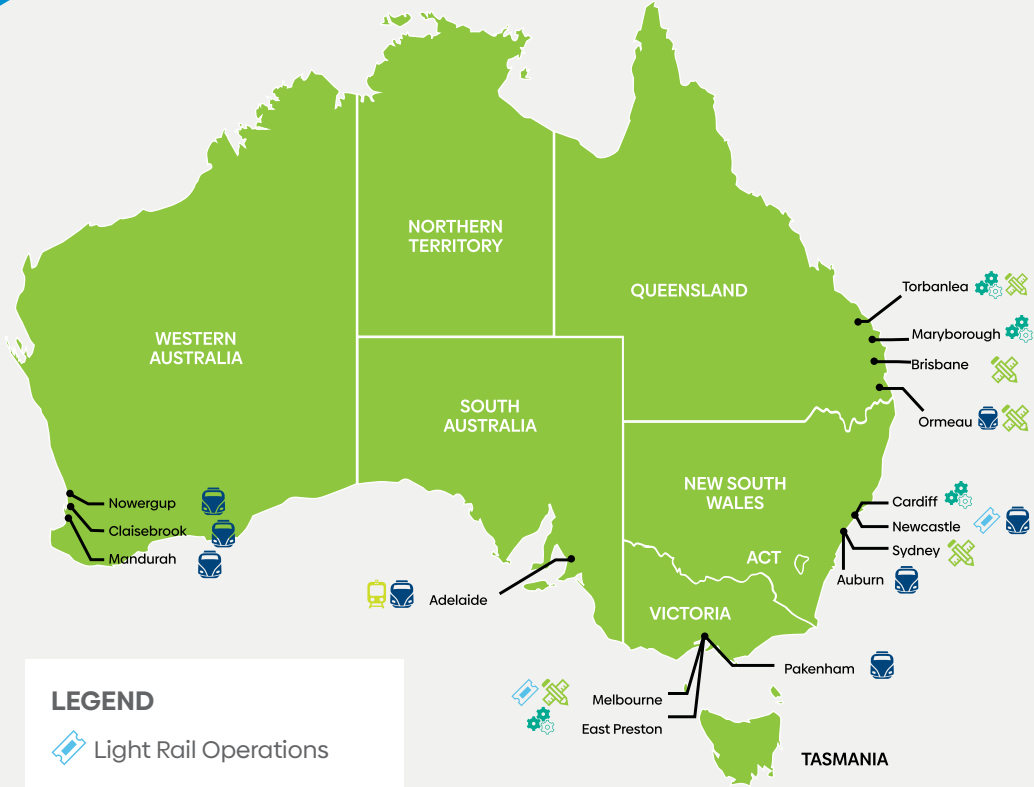
3000+
rollingstock units
overhauled*

*including contracted work





Our established capability



LEGEND

- Light Rail Operations
- Service Delivery Centre
- Fleet Maintenance Centre
- Project Office
- Heavy Rail Operations



ROLLING STOCK

Design, build, maintain and overhaul



OPERATIONS

Rail and bus



DIGITAL AND DATA SOLUTIONS



CONSULTING

Engineering and design



ASSET MANAGEMENT

Freight and passenger



HEAVY AND LIGHT RAIL

Decarbonisation





Downer has been Queensland's trusted and collaborative rollingstock partner for 155 years

We have an established history of manufacturing from our Maryborough facility. The first rollingstock order was to manufacture locomotive trains, which entered service from 1897. We went on to build more than 500

steam locomotives between 1896 and 1958, and we have subsequently continued to build locomotives at Maryborough through to the most recent diesel-electric GT42 class locomotives.



Image courtesy of State Library of Queensland

Our iconic Maryborough site has been a lynchpin of the manufacturing industry in Queensland and we have worked with our customers on a variety of rolling stock for 155 years. We have built more than 1,000 railcars and almost 1,000 locomotives from Maryborough with Downer providing Queenslanders with the EMU, ICE,

SMU200, IMU100, SMU220, IMU120, IMU160, SMU260, electric tilt trains and diesel tilt train fleets.

As we look to the future, we're excited to continue designing, manufacturing and maintaining rail and transit systems to support the passengers of Queensland, as well as those across Australia.





Engineering Consulting Services

Our Engineering Consulting Services business aims to revolutionise the transportation industry by providing seamless, efficient, and sustainable solutions tailored to meet the needs of both our customer, as well as yours.

Our integrated approach sets us apart, offering clients a one-stop solution for all their transportation needs.

By combining engineering excellence, operational expertise, data-driven insights, and project management proficiency, we deliver holistic solutions. With experience across design, manufacturing and through life support our team of engineers will benefit your next transportation project.

More information

Download our Engineering Consulting Services brochure.



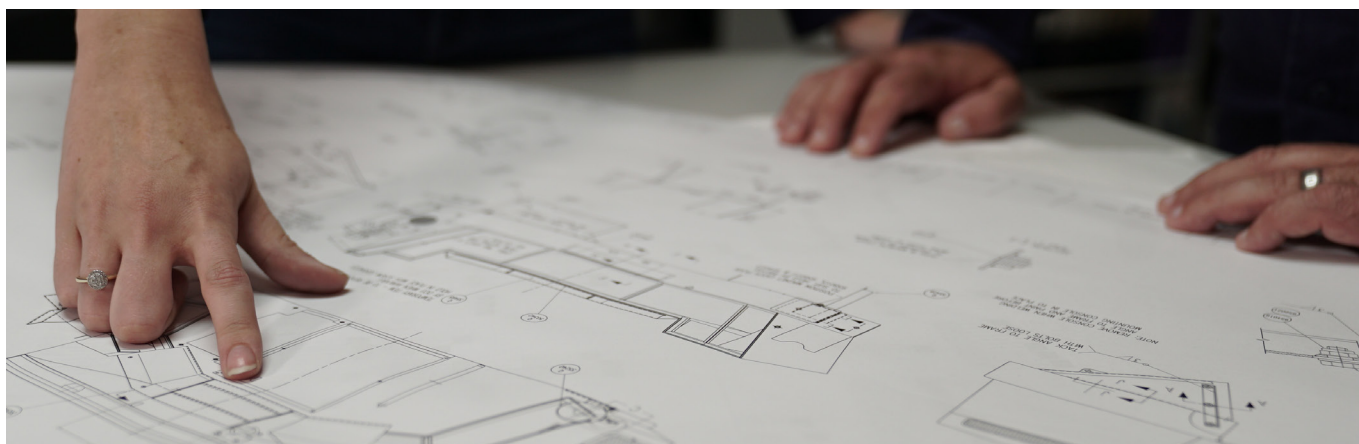
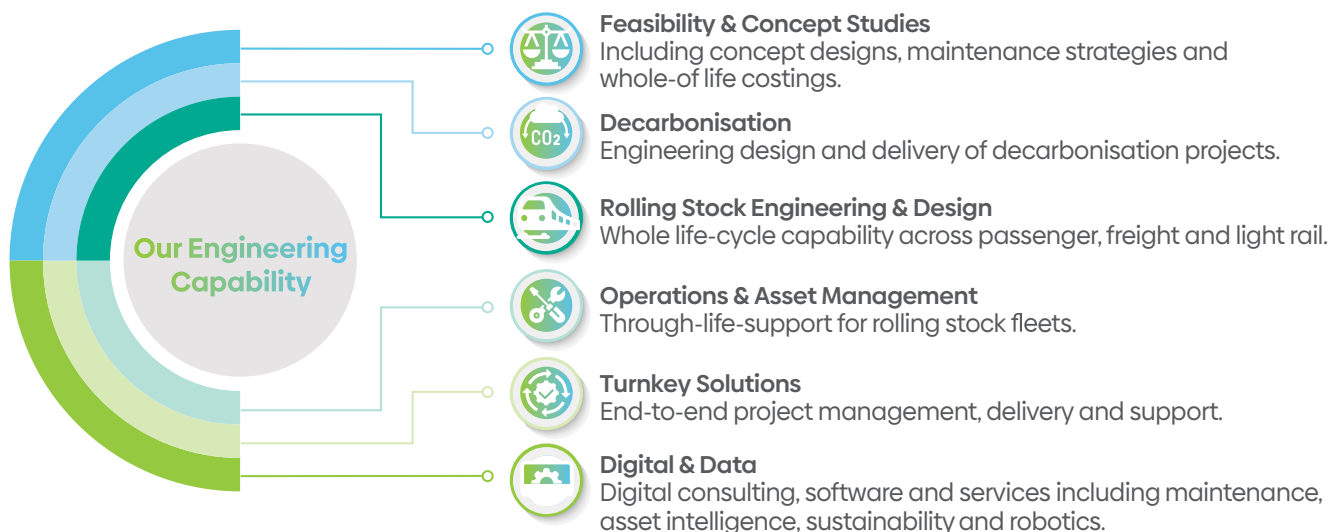
To discuss how we can support you

Contact Todd Garvey
Todd.Garvey@downergroup.com
to arrange a meeting today.

250+ Engineers
and Designers

100+ projects

400,000+ hours
delivered in 2023





Freight and Motive Systems

Downer offers sustainable freight rail solutions, including design, manufacture, and maintenance with a focus on decarbonisation and digital.

Our proud history in freight

Downer has a long history of designing and manufacturing locomotives across Australia for every major operator and in every state. The first steam trains entered service from 1897, before we went on to build more than 500 steam locomotives between 1896 and 1958. We have subsequently continued to build locomotives at Maryborough through to the most recent diesel-electric GT42 narrow gauge locomotive. In total, we have manufactured almost 1,000 locomotives including diesel electric, diesel hydraulic, electric and steam locomotives from Maryborough alone.

Our exciting future

Downer is a trusted partner who offers customers the full spectrum of design, manufacture and maintenance, as well as decarbonisation and digital and data solutions.

As we look to a net zero future, Downer is proud to bring a sustainability focus to provide engineering support, decarbonisation solutions and advanced rail technologies including our TrainDNA platform and an exclusive partnership with ZTR.

Downer's rail freight market offering can be tailored to specific customer requirements such as:

- Engineering fleet support with specialised freight engineering capability
- Advanced Asset Management services as Downer is accredited to ISO55001
- Quality wheel and bearing services
- Rolling stock maintenance
- Rolling stock design and manufacture
- Rolling stock overhaul and repair
- Decarbonisation solutions
- Advanced rail technologies, including data acquisition and asset protection equipment
- ZTR product range.

More information

Download our Freight & Motive Systems brochure.



Watch as Pepe our apprentice boilermaker talks about how she's proud to enable communities to thrive through our freight offerings.



To discuss how we can support you

Contact Troy Sparkman
Troy.Sparkman@downergroup.com
to arrange a meeting today.





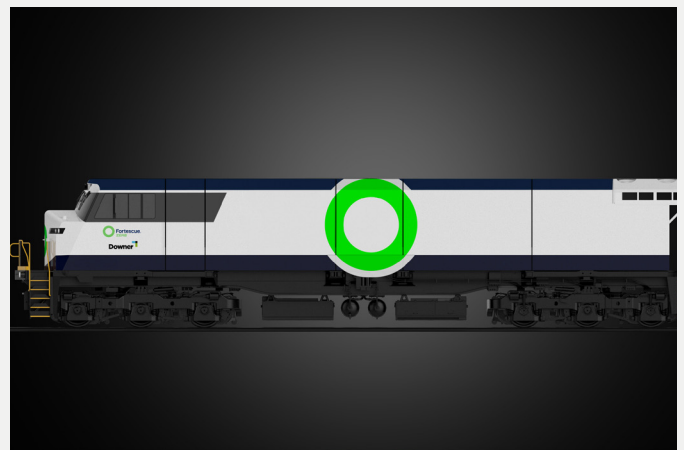
Sustainable transport solutions

World's most energy efficient Battery Electric Locomotive

Downer and Fortescue Zero are collaborating to jointly design and develop a Battery Electric Locomotive (BEL). Together, the two teams will design and develop the world's most energy efficient BEL delivering an innovative zero emissions solution for heavy haul rail, marking an important step forward to the commercialisation of zero emissions power system technologies in heavy industry applications.

This collaboration draws on Downer's rollingstock and engineering experience, combined with Fortescue Zero's decades long experience as a heavy haul rail operator and expertise in green technologies and zero emissions power systems.

The proposed heavy haul rail solution has the potential to help Fortescue achieve their 2030 decarbonisation goals, as well as other heavy emitters globally. This collaboration highlights the strengths and capabilities we have in Australia with two leading Australian companies coming together to tackle a global issue.



Exclusive partnership with ZTR for Australia and New Zealand freight market

Downer is proud to form an exclusive partnership with ZTR for the Australian and New Zealand Freight Market. Together, we can offer customers immediate reductions in their emissions, helping to achieve net zero.

ZTR is a renowned company specialising in designing cutting-edge products to enhance the performance and sustainability of locomotives.

Downer is exclusively able to provide customers with the ZTR product range including KickStart, SmartStart, BOA and Pivot.





Digital and data solutions

We deliver a full-service approach for improved passenger experiences through next generation asset management.

To support our customers, we offer multiple areas of digital and data expertise.



RTS Digital, our digital consulting, software and services business leveraging over 15 years of experience in technology innovation. Powered by Downer's TrainDNA platform, RTS Digital takes a product-based approach. No matter the size of the customer or digital maturity, our modular approach provides the flexibility to allow customers to advance their rail journey into digital practices based on their needs and capability. Our offering packages capabilities and tools into modules addressing specific customer needs across Digital Maintenance, Operational and Asset Intelligence, Robotics and Sustainability.

At RTS Digital, we focus on supporting rail centric customers across varying maintenance and operational challenges – today and into the future.

Some examples of the unique product features are:

- **Digital Maintenance Management:** Improving maintenance success by considering planned work orders, corrective work orders, inventory, depot resources, rostering and competencies when scheduling maintenance.
- **Operational Intelligence:** Providing the operator with situational awareness of what is happening on the network and predicting problems that will impact the passenger experience before they occur.
- **Asset Intelligence:** Capturing the data and managing the engineering and safety cases to extend overhaul periodicity on items such as wheels and bogies.
- **Robotics:** Automating exam inspections end to end, via autonomous mobile robots. The robots work in any depot without the need to modify it. New inspection tasks or entire exams for new fleets can be added within weeks by programming the robots.

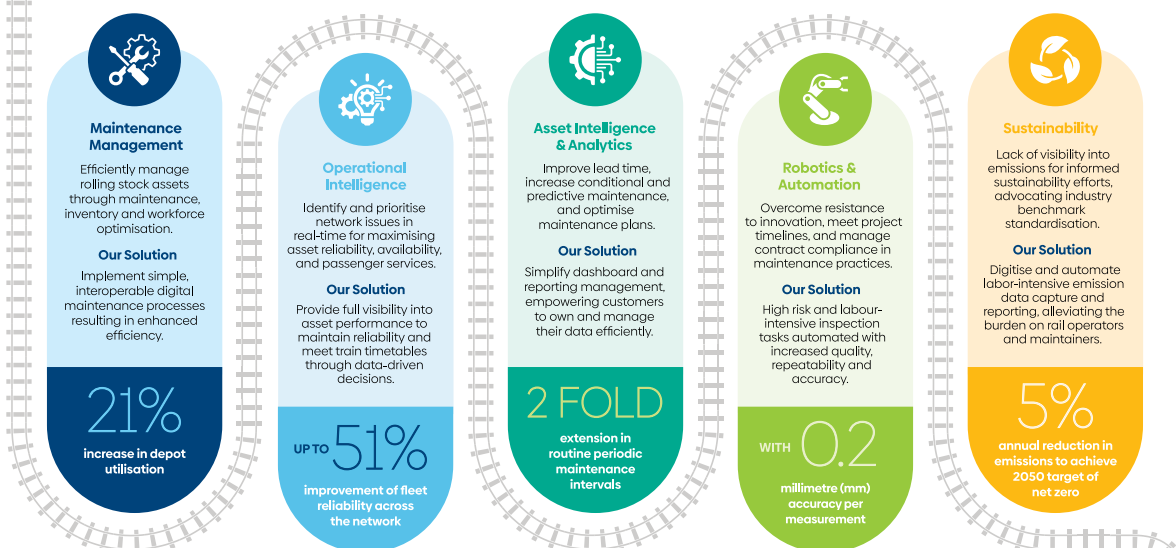
Visit our website

To discuss how we can support you

Contact rtsdigital@downergroup.com to arrange a meeting today.



Digital rail asset management and maintenance - The key to staying on track





xDNA, established in 2016 and trading under its current name since 2023, is the digital arm of Downer. We specialise in advanced technology solutions for critical infrastructure industries, including utilities, energy, rail, defence, mining, and transport. Our mission is to integrate human expertise with cutting-edge technology to enhance operational efficiency, safety, and sustainability.

Leveraging innovations in artificial intelligence, augmented reality and virtual reality, xDNA transforms how our clients manage and optimise their operations. Our solutions enable predictive maintenance, real-time decision-making, and immersive training experiences, driving significant improvements in efficiency and safety.

Our expert team uses complex data analytics and real-time processing to deliver actionable insights and comprehensive solutions through our Neuroverse Intelligence Platform. This platform ensures effective data utilisation to drive business value and innovation.

Based in major Australian cities and with data solutions hosted in the secure Microsoft Azure Australian region, xDNA ensures data sovereignty and local expertise. We are committed to providing reliable, high-quality service and driving digital transformation in critical industries. xDNA is your trusted partner for achieving strategic objectives and navigating the modern industrial landscape.



Visit our website

To discuss how we can support you

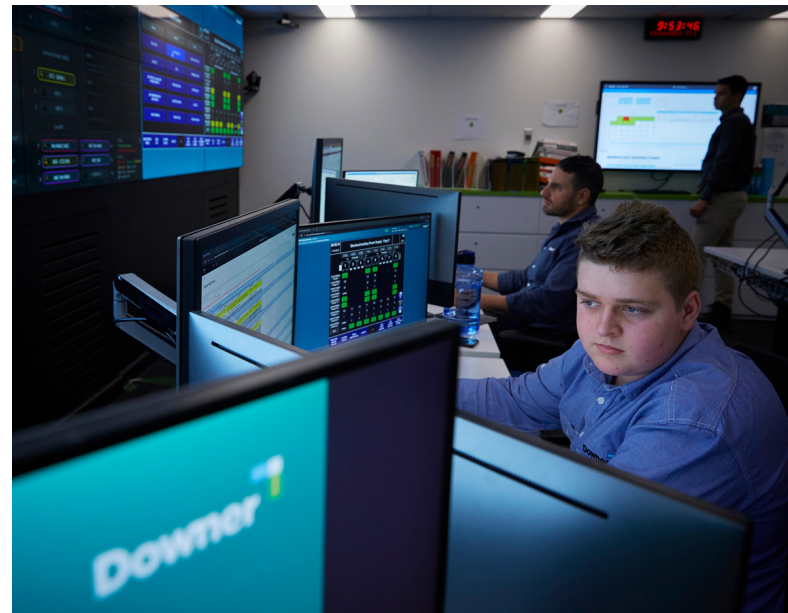
Contact Dean Coughran
dean.coughran@xdna.com.au
to arrange a meeting today.

National Integrated Operations Centre

Our National Integrated Operations Centre which is armed with Downer’s industry-leading ICT capability and expert knowledge in rail network operations. Our team facilitates maintenance planning, engineering support and data analytics to provide benefits for our customers.

Technical Subject Matter Experts

Our expert pool of technical SMEs delivering effective identification of failure modes and expedited containment of solution actions for our customers across digital and data for the rail industry.





Downer LinkedIn



www.downergroup.com/AusRail2024

