



Water

Leading provider of complete water lifecycle solutions.

Downer today

We are a leading provider of integrated services across Australia and New Zealand, delivering and maintaining essential infrastructure that enables communities to thrive.

26,000 employees 

\$10.6 billion revenue in 2025

500+ locations 

A network of 21,000 suppliers and subcontractor partners 





Putting people first.

The safety, health and wellbeing of our workforce is our first priority.

We believe that our work can be performed in a way that is safe for our people, the environment, our business and the communities in which we operate.

Our teams live and breathe this well-established and deeply held belief which is founded on the principle of Zero Harm.

Our Purpose:

Enabling communities to thrive.

Our Promise:

Our customers' success is our success.

Our Pillars:



Safety & Sustainability

Safety is our first priority. Zero Harm to our people, communities and environment is embedded in our culture. We will leave a positive legacy for future generations.



Delivery

We build trust by delivering on our promises with excellence while focussing on sustainability, value for money and efficiency.



Relationships

We collaborate to build and sustain enduring relationships with our customers, our people and communities based on trust and integrity.



Thought Leadership

We remain at the forefront of our industry by employing the best people and having the courage to challenge the status quo.

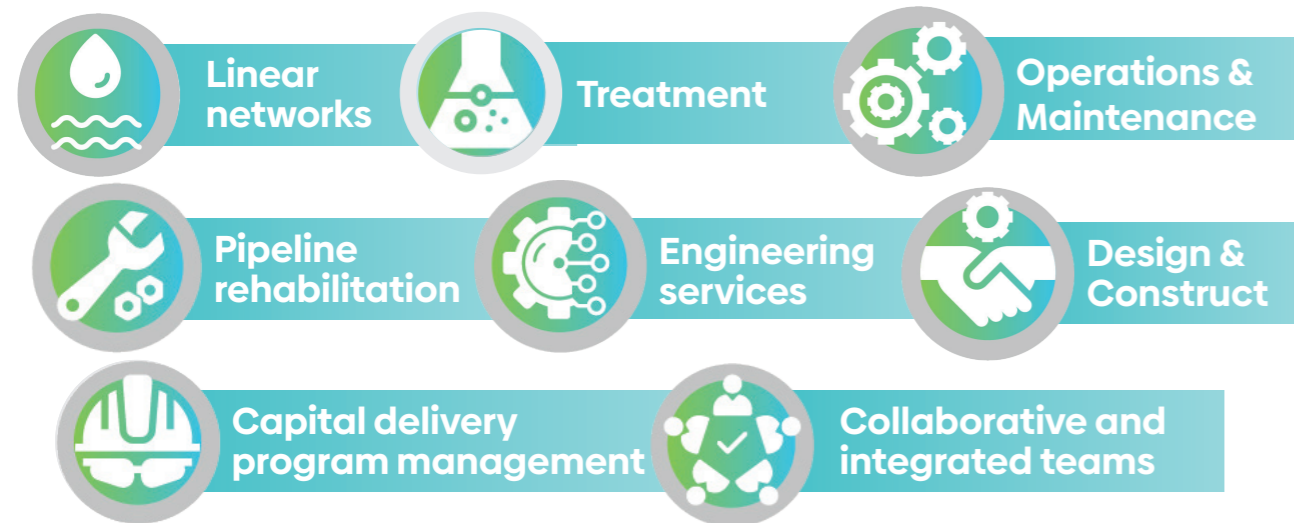


About us

Decades of experience. Size and scale to deliver for our customers.

We're proud to be the largest provider of outsourced water services in Australia and New Zealand.

Our services span the full asset lifecycle, including design, construction, operations and maintenance across water and wastewater treatment, linear networks and process improvement.



Australian owned and operated

Over 35 years, we have designed and constructed

80+ treatment plants

Award winning projects

80,000km water pipelines serviced across AU and NZ

10+ major customers along Australia's east coast

Australia's 1st biosolids gasification facility

Delivering water and wastewater services to more than **14 million people** across Australia and New Zealand

How we deliver for you.

You can count on Downer's track record as a trusted Tier 1 contractor and leader in the field.

We leverage our in-house teams to provide a full suite of end-to-end services for our utilities, energy and industrial clients.

As urban areas grow and environmental regulations are tightened, the water industry faces significant challenges in upgrading and expanding infrastructure to ensure a sustainable supply of clean water, efficient wastewater collection, and the management of stormwater.

Downer is proud to continue playing a major part in delivering vital water services that connect communities in urban and regional areas - now and into the future.

Capability by sector	Capability by activity
<ul style="list-style-type: none"> ✓ Water resources <ul style="list-style-type: none"> Dams Reservoirs Stormwater Desalination plants 	<ul style="list-style-type: none"> ✓ Engineering services <ul style="list-style-type: none"> Multi-disciplinary design Asset management
<ul style="list-style-type: none"> ✓ Treatment <ul style="list-style-type: none"> Water treatment plants (drinking) Wastewater treatment plants Biosolids gasification Recycled water treatment plants Industrial water treatment plants Waste to energy (W2E) 	<ul style="list-style-type: none"> ✓ O&M contracts <ul style="list-style-type: none"> Planned works Reactive works
<ul style="list-style-type: none"> ✓ Networks <ul style="list-style-type: none"> Drinking / raw water network Wastewater network Recycled water Pump stations 	<ul style="list-style-type: none"> ✓ D&C projects and programs <ul style="list-style-type: none"> Capital works (treatment plants and networks) Land development (suburban growth)

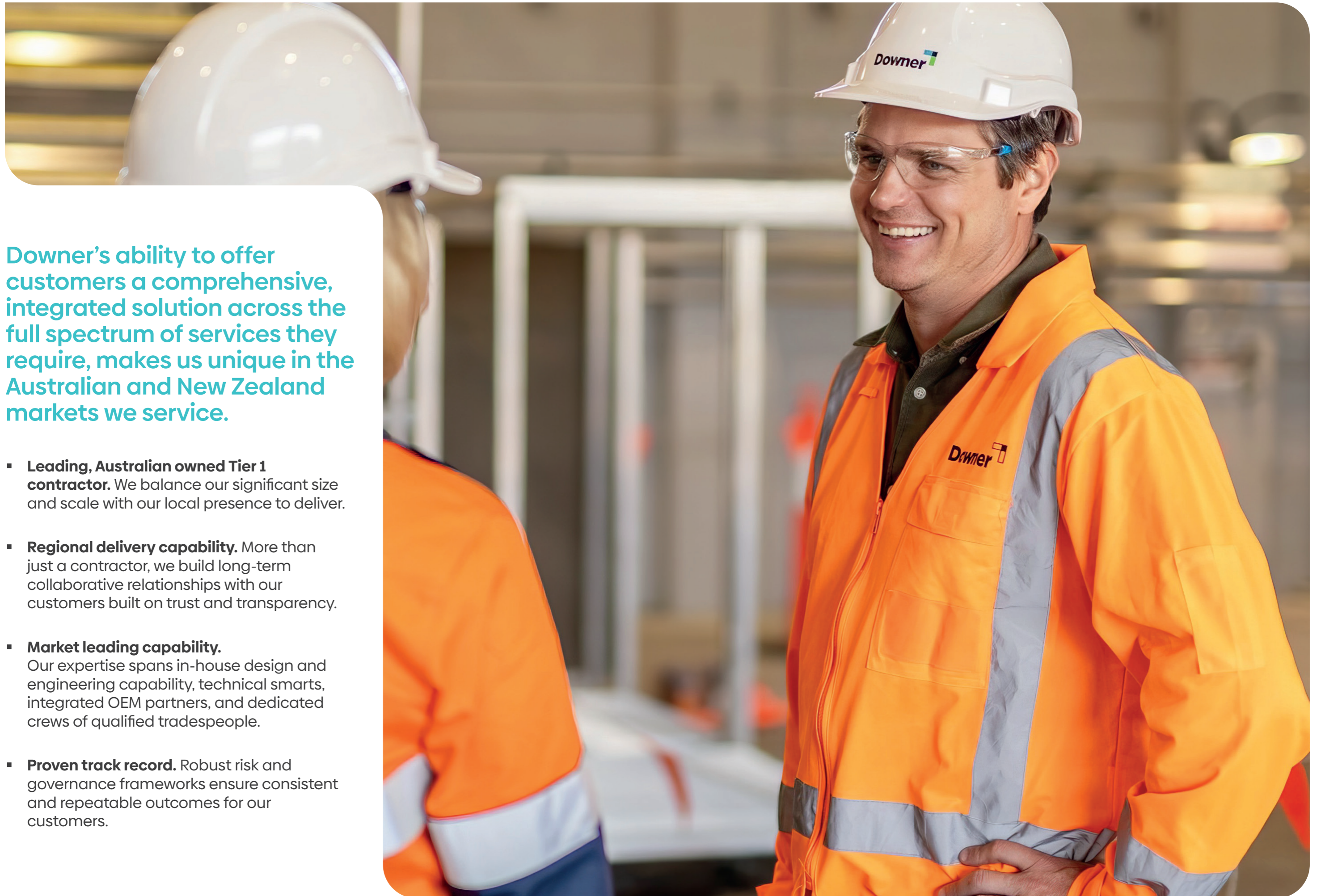
Where we operate in Australia.

We have a proud legacy and significant presence along Australia's east coast delivering core services in long term collaborative partnerships.



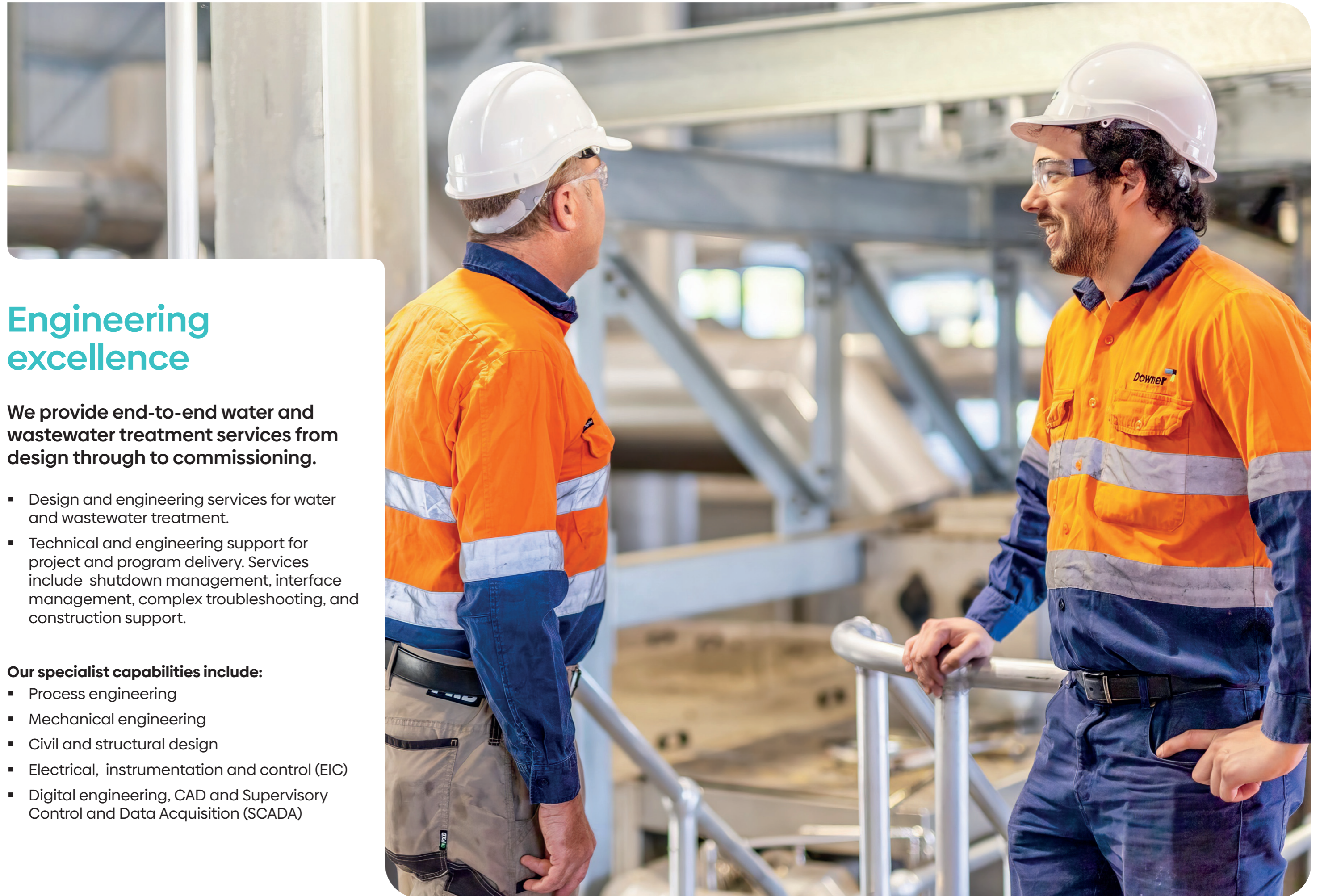
Our clients:





Downer's ability to offer customers a comprehensive, integrated solution across the full spectrum of services they require, makes us unique in the Australian and New Zealand markets we service.

- **Leading, Australian owned Tier 1 contractor.** We balance our significant size and scale with our local presence to deliver.
- **Regional delivery capability.** More than just a contractor, we build long-term collaborative relationships with our customers built on trust and transparency.
- **Market leading capability.** Our expertise spans in-house design and engineering capability, technical smarts, integrated OEM partners, and dedicated crews of qualified tradespeople.
- **Proven track record.** Robust risk and governance frameworks ensure consistent and repeatable outcomes for our customers.



Engineering excellence

We provide end-to-end water and wastewater treatment services from design through to commissioning.

- Design and engineering services for water and wastewater treatment.
- Technical and engineering support for project and program delivery. Services include shutdown management, interface management, complex troubleshooting, and construction support.

Our specialist capabilities include:

- Process engineering
- Mechanical engineering
- Civil and structural design
- Electrical, instrumentation and control (EIC)
- Digital engineering, CAD and Supervisory Control and Data Acquisition (SCADA)

Linear Networks

With experience working across all kinds of environments, we have the internal capability to ensure that our customers' water and wastewater networks are designed, built, operated and maintained to their optimum performance.

Backed by our proven track record of delivering high-quality, cost-effective solutions, our teams bring their vast experience and expertise to deliver some of the most complex projects in the water industry.

From minimising stakeholder impacts and managing network disruptions, our unwavering commitment to safety and to excellence in meeting our customers' expectations is what sets apart.

- Large diameter reticulation
- Outfall and trunk sewers
- Live sewers
- Rising mains
- Trunk water mains
- Stormwater drains
- Remediation works



The **award-winning** Redbank Plains Pump Station delivered by Downer in 2024 on behalf of Urban Utilities.



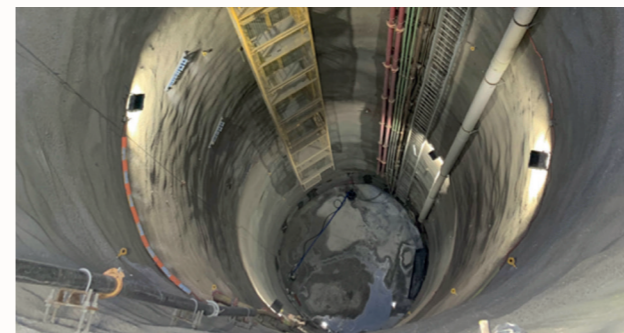
Water

Design, construction, and maintenance of pipeline infrastructure for water networks transporting potable water from treatment plants to residential, commercial, and industrial consumers.



Wastewater

Expertise in the operation, maintenance and management of all sewer and wastewater networks.



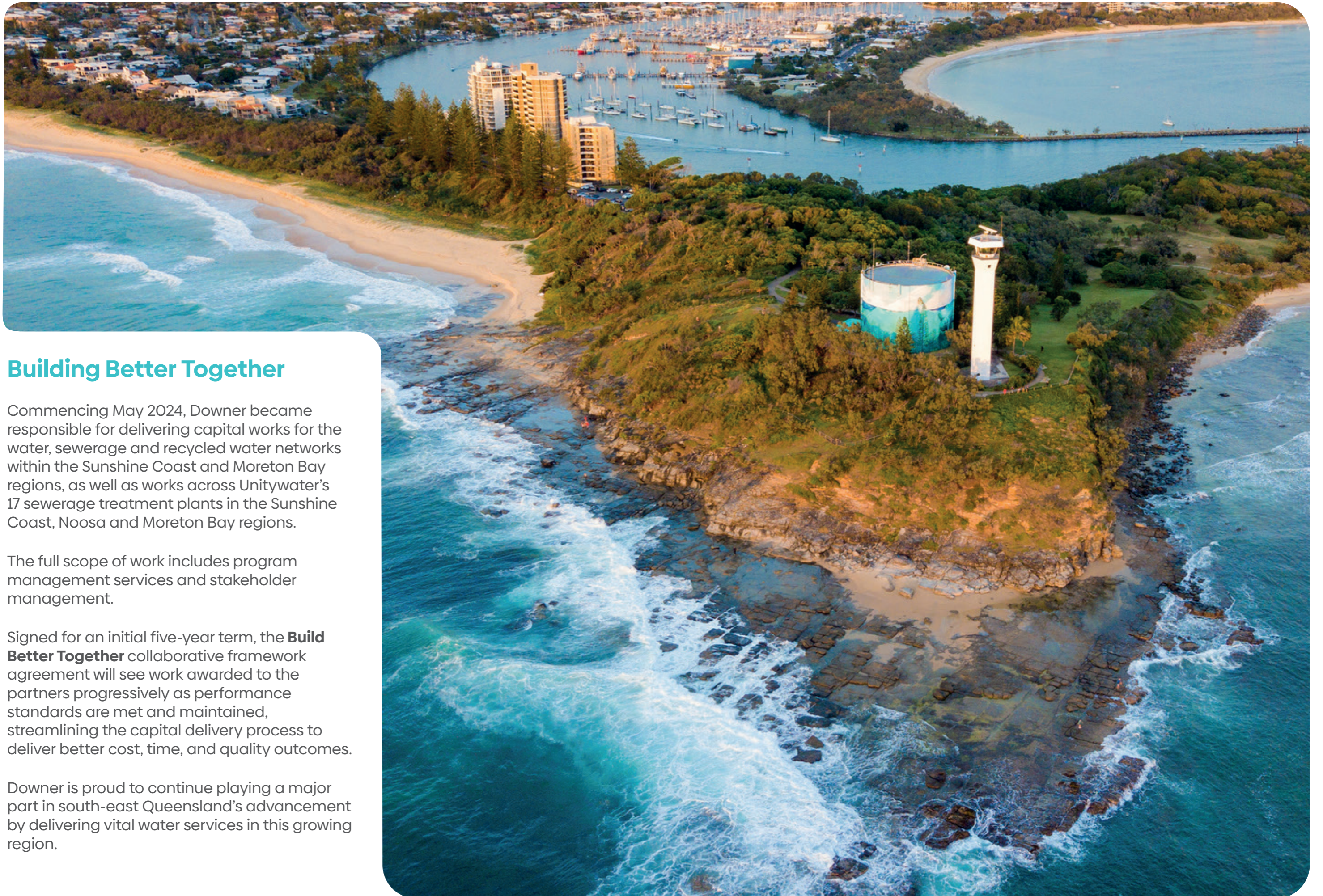
Stormwater

Design and implementation of stormwater management solutions, including pipelines and associated infrastructure, to control run-off and prevent flooding in urban and rural environments.



Pipelines

Specialising in the installation, repair, and maintenance of pipelines of various sizes and materials, ensuring optimal performance and longevity.



Building Better Together

Commencing May 2024, Downer became responsible for delivering capital works for the water, sewerage and recycled water networks within the Sunshine Coast and Moreton Bay regions, as well as works across Unitywater's 17 sewerage treatment plants in the Sunshine Coast, Noosa and Moreton Bay regions.

The full scope of work includes program management services and stakeholder management.

Signed for an initial five-year term, the **Build Better Together** collaborative framework agreement will see work awarded to the partners progressively as performance standards are met and maintained, streamlining the capital delivery process to deliver better cost, time, and quality outcomes.

Downer is proud to continue playing a major part in south-east Queensland's advancement by delivering vital water services in this growing region.

Operations & Maintenance

Safe, reliable and efficient water, wastewater and stormwater networks – around the clock.

With responsive service models and qualified people on the ground, Downer keeps its customers' water, wastewater and stormwater assets flowing.

Supporting reticulation, treatment and network resilience, our team works alongside asset managers to maintain critical infrastructure with speed, safety and precision.

Capabilities

- **Emergency Response**
Rapid mobilisation for urgent service requests.
- **Network Maintenance**
End-to-end support to keep assets performing and compliant.
- **Treatment Plant Operations**
Operations, inspections and technical maintenance to ensure reliable service delivery.
- **Cyclic and Electrical Maintenance**
Planned programs and fault management, including electrical services.
- **Inspections & Monitoring**
Specialist tools and techniques including: CCTV inspections, leak detection, thermal imaging, and vibration analysis
- **SCADA support**
Monitoring and maintenance automation systems, including PLC programming.
- **Breakdown and Repair**
Fast turnaround on asset faults and failures.
- **Data-Driven Asset Management**
Collection, condition assessment and lifecycle planning.
- **Renewals and Major Works**
Efficient delivery of pipe replacements, overhauls and capital upgrades.

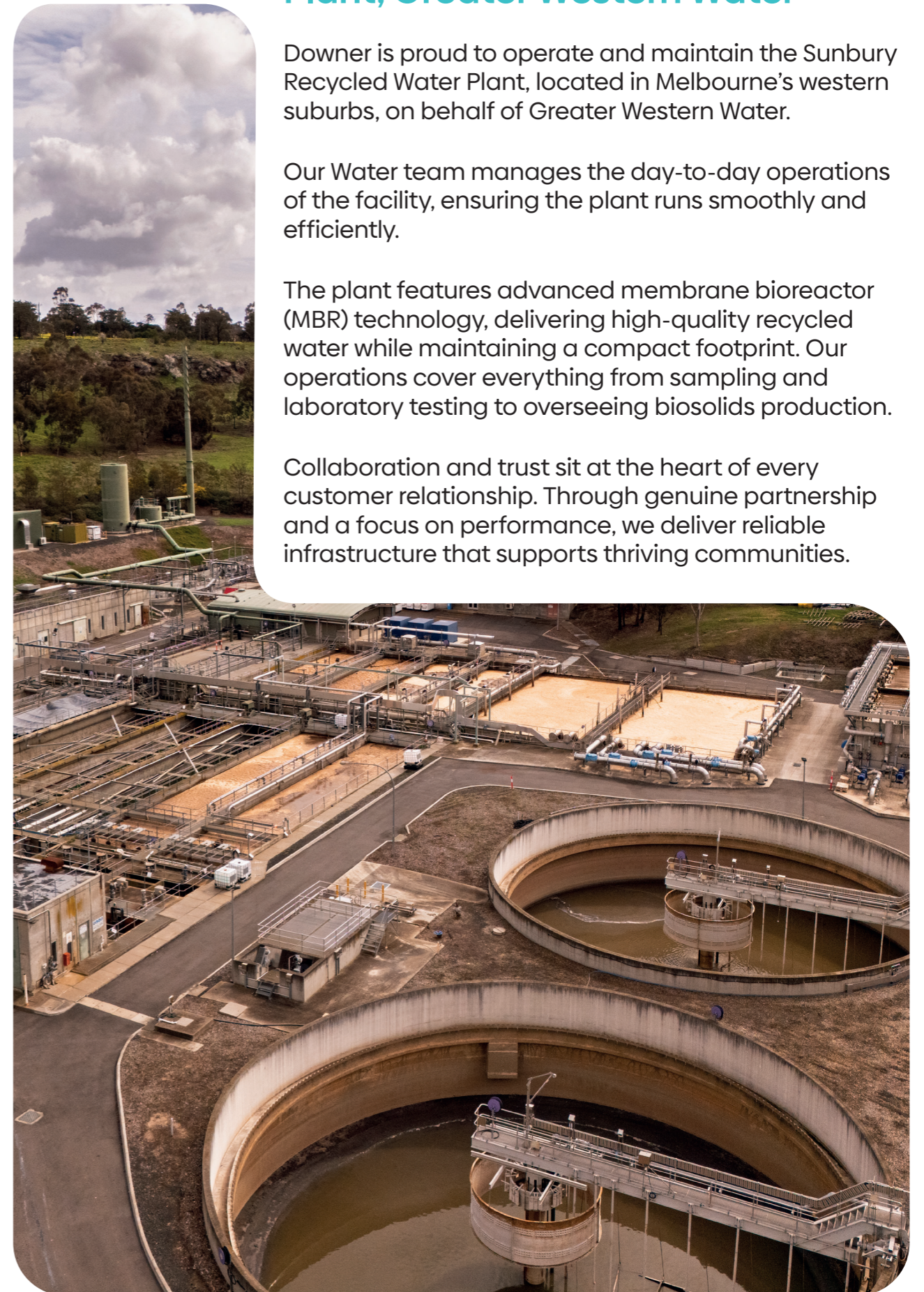
Sunbury Recycled Water Treatment Plant, Greater Western Water

Downer is proud to operate and maintain the Sunbury Recycled Water Plant, located in Melbourne's western suburbs, on behalf of Greater Western Water.

Our Water team manages the day-to-day operations of the facility, ensuring the plant runs smoothly and efficiently.

The plant features advanced membrane bioreactor (MBR) technology, delivering high-quality recycled water while maintaining a compact footprint. Our operations cover everything from sampling and laboratory testing to overseeing biosolids production.

Collaboration and trust sit at the heart of every customer relationship. Through genuine partnership and a focus on performance, we deliver reliable infrastructure that supports thriving communities.



Water, wastewater and recycled water treatment

Our team has designed and constructed over 80 treatment plants throughout Australia and New Zealand.

As a major delivery partner, we provide access to world-leading technologies to help deliver the lowest whole-of-life cost solutions and best practice water outcomes for our customers.

We deliver:

- Design
- Construction
- Commissioning
- Operations and maintenance
- Greenfield and brownfield upgrades
- Sustainability, circular economy and net zero initiatives

100% track record

in meeting performance guarantees on total operating costs (combined chemicals, power and biosolids).

27 membrane bioreactors

delivered since 2004.



Membrane Bioreactors (MBRs)

Downer has delivered some of the largest MBRs for water authorities across Australia. MBRs offer a number of advantages over traditional methods, including a smaller footprint for treatment efficiency, better solids removal, and the production of higher quality effluent.



Conventional and Sequenced Batch Reactor (SBR) Processes

Downer has expertise in the use of various biological nutrient removal processes for removal of contaminants from sewage and industrial wastewaters. These processes combine activated sludge and, where required, stages of filtration and disinfection to achieve high quality treated effluent.



Biosolids gasification

An Australian first, waste-to-energy process that converts biosolids into a safe, environmentally friendly biochar, which can be used as a soil conditioner, providing a sustainable solution for the waste product.



Water recycling

Ultrafiltration, disinfection, and reverse osmosis to ensure treated water meets the required quality for reuse in various applications, including drinking, industrial, or irrigation use.



Stage 1: Dewatering (inside building)

Stage 2: Dryers (inside building)

Stage 3: Gasification Plant

Loganholme Gasification Facility

In 2020, Downer joined forces with the Logan Water Partnership, its long term customer Logan Water and delivery partner Pyrocal to deliver Australia's first biosolids gasification facility at the Loganholme Wastewater Treatment Plant in south-east Queensland.

The facility processes sewage sludge by dewatering it in a centrifuge, drying it in a belt dryer, and treating it with a high temperature gasifier. The process produces heat, with the energy recovered and used to operate the drying process.

The gasification facility has been designed to be energy neutral, with 70% of the energy in biosolids recovered and reused, and the daily energy requirements met by a 1MW onsite solar array. The gasification produces a biochar product that is stable, non-odorous, easily handled, improves soil water retention and provides nutrients and trace elements for plant growth.

Biosolids gasification: an Australian first

Downer collaborated with delivery partners Logan Water, WSP and Pyrocal, to design and construct Australia's first biosolids gasification facility at the Loganholme Wastewater Treatment Plant.

The cutting-edge facility thermally treats biosolids, producing biochar and destroying dangerous contaminants while generating substantial energy from waste products.

Biosolids gasification benefits water utility providers, customers, and communities by:

- Recovering energy from waste.
- Reducing energy consumption.
- Removing carbon and binding heavy metals, which reduces carbon emissions.
- Destroying persistent organic pollutants and micro and nano-plastics.
- Complying with environmental regulations.
- Reducing operating costs.
- Reducing community impacts associated with traditional biosolid disposal transportation.
- Producing environmentally friendly biochar for agricultural and household gardening use.

Removal and destruction of **PFAS compounds** including PFHxA and PFOS

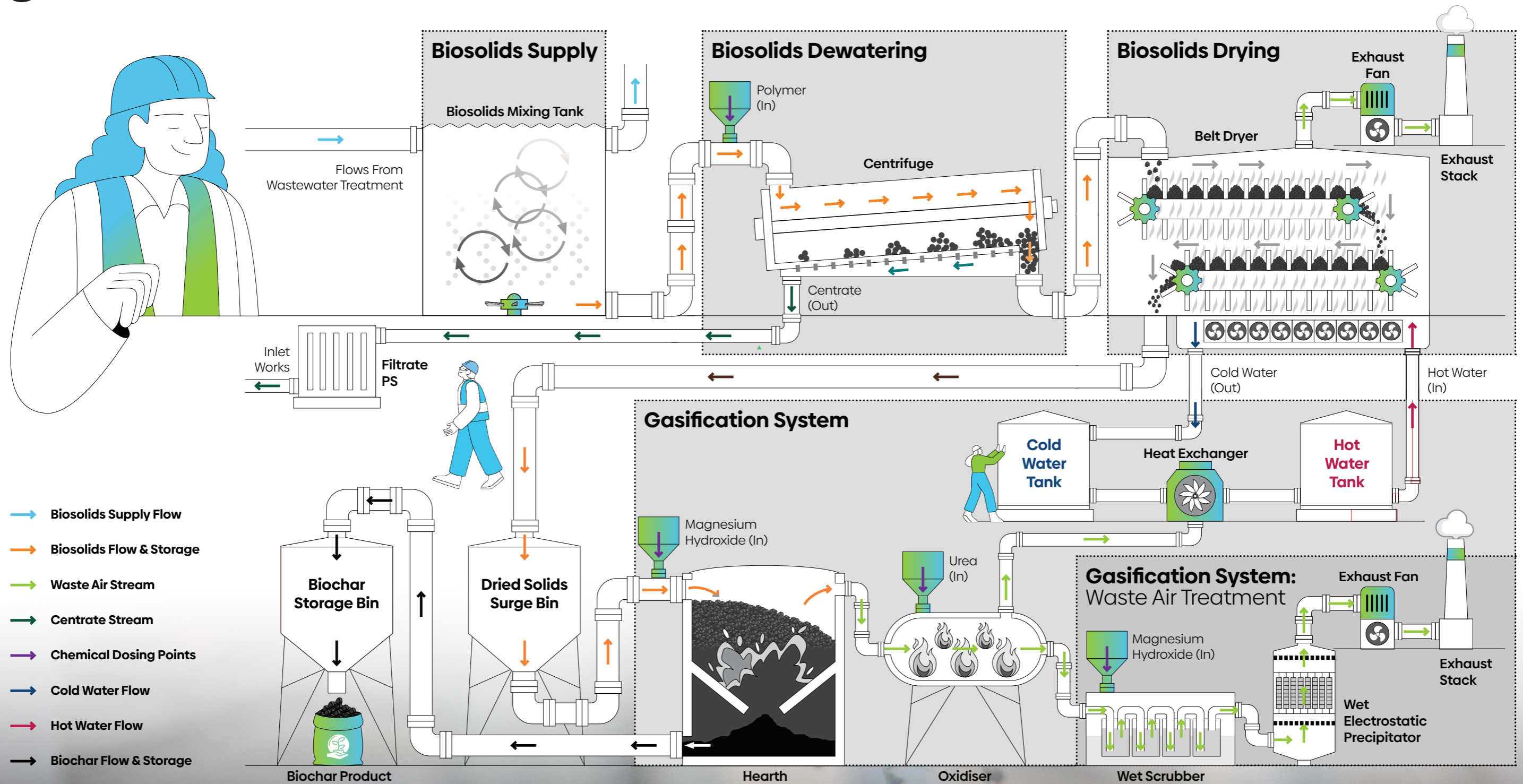
Energy recovery sufficient to provide for an energy self-sustaining process

Significant annual **OPEX savings** through eliminating the requirement for biosolids disposal and the generation of income from the sale of biochar

Reduced carbon footprint Due to carbon sequestration via biochar

The process Biosolids gasification.

The gasification process reduces the volume of biosolids by **90%** and produces a safe, environmentally friendly biochar, which can be used as a soil conditioner, providing a sustainable solution for the waste product.



Trenchless Technology

Advanced no-dig solutions across complex urban and sensitive environments.

Downer provides end-to-end services across the full lifecycle of network assets - from inspections and condition assessments through to maintenance, renewal, rehabilitation, and construction of new infrastructure.



Inspections & Conditions Assessment

- CCTV inspection
- Acoustic sensing
- Leak detections



Renewal and Rehabilitation

- Pipe Bursting
- Slip Lining
- Relining (Gravity Pipeline)
 - CIPP (UV and steam curing)
 - Spiral Wound
 - PVC Fold & Form
- Relining (Pressure Pipe)



Maintenance and Repairs

- Water jet/combo cleaning
- Patching
- Robotics



Construction of new assets

- Horizontal Directional Drilling (HDD)
- Micro-tunnelling

Downer PipeTech

PipeTech, a Downer company, is a trusted provider of trenchless pipeline repair and rehabilitation.

With renowned in-house expertise, end-to-end services and cutting-edge capabilities, PipeTech embraces advanced technology to maximise the life and reliability of our clients' assets.

Specialising in:



TUNNELINE® Technology

Downer PipeTech provides our proprietary TUNNELINE® structural reinforced-concrete lining system, a unique and versatile system for structural remediation on pipes, culverts and tunnels with a design life of more than 100 years.

This award-winning system is a simple, in-situ reinforced concrete lining technique designed for difficult-to-access sites and has a very low environmental impact.



Berolina - CIPP-UV Technology

Berolina-CIPP is a jointless, seamless, pipe-within-a-pipe with the capability to rehabilitate assets and gravity (sewer) pipelines with minimal diameter reduction.

It involves a glass fibre reinforced structural liner that is cured-in-place using UV light and is one of several trenchless rehabilitation methods used to repair ageing pipelines.



Best practice project management is in our DNA.

Downer's Delivery Management Methodology (DMM) shapes how we operate and deliver value to our customers.

It serves as a guiding framework for effective delivery, establishing governance and leadership standards that ensure consistent and repeatable outcomes for our customers.

Drawing from established project and contract management practices, the DMM is adaptable to business-specific capabilities while aligning with the unique requirements of our customers and legislative standards.



NAIDOC Week 2025 in Queensland with Downer's client, Logan Water. The team received a heartfelt Welcome to Country by Aunty Robyn Williams, a performance by the Jinndi Mibunn Dancers and Lucy Davis, and a meaningful yarning circle.

Reconciliation Action Plan

Downer acknowledges Aboriginal and Torres Strait Islander peoples as the traditional and continuing custodians of Australia.

We acknowledge the spiritual and cultural bonds linking them to Country. Downer is committed to reconciliation and is grateful for the ongoing support from Reconciliation Australia to progress our Innovate Reconciliation Action Plan initiatives.

Downer Group's first Innovate Reconciliation Action Plan (RAP) covering both Downer and Spotless was endorsed by Reconciliation Australia in May 2022 and launched in July 2022. Downer aims to close out all commitments in this RAP in the first half of FY25, then launch our next Innovate RAP outlining Downer's additional commitments through to FY26.

The RAP document aims to enhance existing relationships with Aboriginal and Torres Strait Islander peoples and foster new opportunities. The implementation and delivery of our RAP affirms our commitment to the reconciliation process and formalises our goals to support Aboriginal and Torres Strait Islander employees an

EmpowHER

Downer Women's Network

EmpowHER is Downer's women's network which aims to create a supportive and inclusive environment for women across the organisation.

With local chapters across Australia and New Zealand, the EmpowHER network provides a platform for women employees to connect, voice their thoughts, share experiences and receive guidance, ultimately fostering their professional growth and career.

Led by a governance committee comprising women right across Downer alongside executive sponsorship, the purpose of EmpowHER is to:

- Create a safe and confidential space for women to discuss challenges, seek advice and share experiences, especially in a male-dominated work environment
- Offer opportunities to share career progression and life journeys, fostering a culture of mentorship and guidance
- Facilitate interactions with senior leadership team members, eliminate barriers and address the glass ceiling, providing insight into career progression and life journeys.

“Being part of EmpowHER was one of my most inspiring initiatives and challenges of 2024. It was fantastic to see members and allies coming together at our first round of events. Looking forward to seeing what we will build together as a network this year!”

Maria Gatica, Project Engineer



400+ EmpowHER event attendees during 2024.

Network of 485 members and allies.

EcoMarine



EcoMarines sponsorship supporting Queensland school students.

Downer is a Bronze sponsor of EcoMarines, a not-for-profit foundation based in south-east Queensland that supports school students to become environmental leaders through education and positive action.

EcoMarines work to improve the water quality of waterways and adjacent marine environments around the Moreton Bay region, running school-based education programs to inspire a community of environmental heroes with a vision for a healthy environment for local marine and wildlife through collaborative community action.

Over 400,000 students have already been engaged through the EcoMarines Foundation programs and Downer's ongoing sponsorship will help sustain the delivery of EcoMarines programs in schools across Queensland.



Better together

We are committed to building strong relationships with our customers, people and communities.

Together with our customers, we connect communities and help to shape a sustainable future. We do this by:

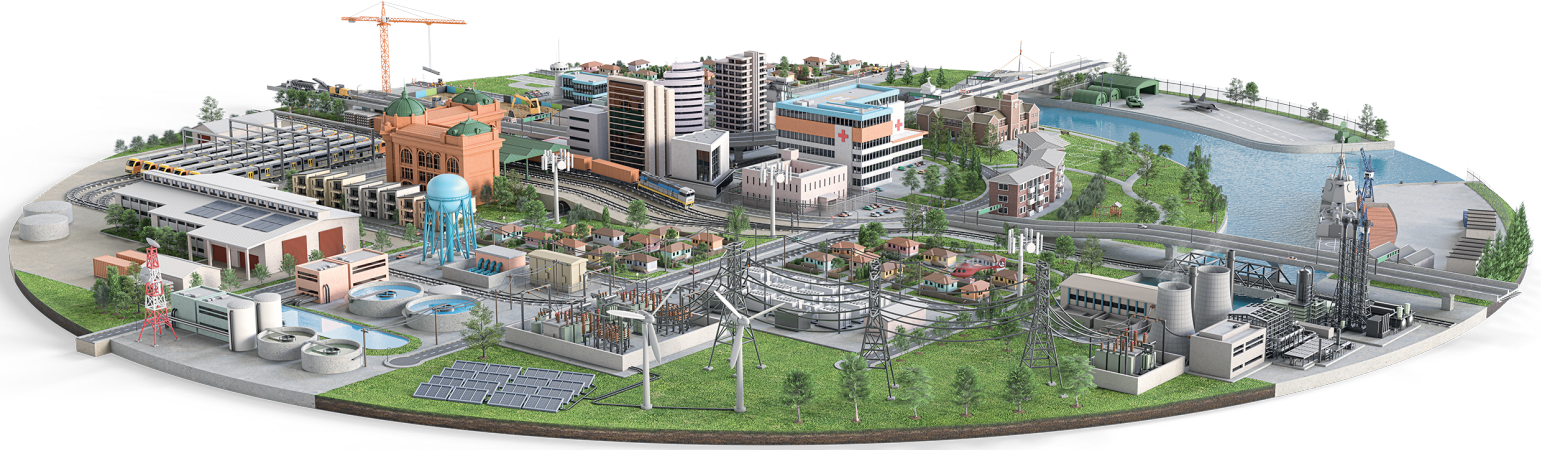
- Prioritising local supplier spend, working local businesses across our projects in regional and remote areas of Australia.
- Partnering with Indigenous businesses including Manaji Projects in Queensland to train, hire and retain First Nations people.
- Supporting the local community in the regions we operate.
- Building a workforce for the future through engagement with universities and tertiary training organisations to support graduates, apprentices and cadets across our organisation.



Proud to be a **Corporate Member of**

WaterAid

so we can assist them in their vision of a achieving a world where everyone has access to clean water.



Energy & Utilities.

Australia

135 Coronation Drive
Milton QLD 4064

Triniti Business Campus
39 Delhi Road
North Ryde NSW 2113

Level 10
567 Collins Street
Melbourne VIC 3000

140 St Georges Terrace
Perth WA 6000

New Zealand

130 Kerrs Road
Wiri
Auckland North Island

Acknowledgment of Country

Downer acknowledges Aboriginal and Torres Strait Islander peoples as the First Australians and the Traditional Custodians across Australia.

We would like to acknowledge and pay our respects to the Elders of the past, present and future in maintaining the culture, Country and their spiritual connection to the land.

Whakatauki

Whakatauki Ko te whānau, ko te manaaki, ko te kairangatira, ko te ngākau pono ngā tikanga tuku iho hei korowai mo tatou. Ko te Kauri i whakawhiwhi haumaruru, ko te Rimu i whakawhiwhi taonga, ko te Tōtara i whakawhiwhi whanaungatanga, ko te Kahikatea i whakawhiwhi whakaaro matakite. Ngā pou e wha i aumangea ai te whakatauki 'Mā te whanaungatanga ka angitū'. Hui e! Taiki e!

We are held together by our closely held values of family and relationships, care and respect, excellence and integrity. The Kauri connects us to Safety, the Rimu connects us to Delivery, the Tōtara connects us to Relationships and the Kahikatea connects us to Thought Leadership. These are our four Pillars upon which we build 'Relationships creating success'. United and ready to move forward!

